

Angle Bracket
Materials

Plywood

- 1 off 15"x 6"x 3/4"
- 1 off 8 1/2"x 6"x 3/4"
- 1 off 11 1/2"x 5 1/2"x 3/4"
- 2 off 15"x 3/4"x 1/2"
- 2 off 15"x 1 19/32"x 1/2"

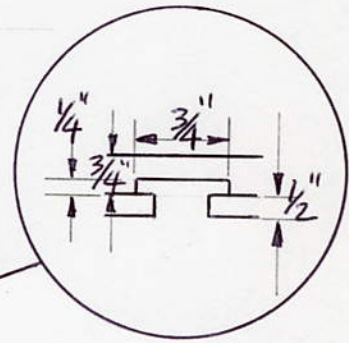
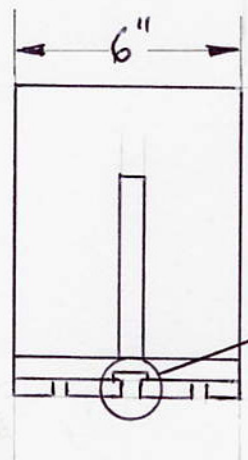


Table Slot Nut

- T-Slot Size 7/16"
- Screw Size 3/8"- 16
- A 11/16"
- B 7/32"
- C 1/2"
- D 7/8"

